



ANALYSIS TOOLS FOR ELECTRON AND X-RAY DIFFRACTIONS

Installing and Registering Academic Edition

31/05/2022

The graphic features a dark background with several overlapping images and text boxes. On the left, there are circular diffraction patterns. In the center, there are colorful maps of grain orientations. On the right, there are electron diffraction patterns. The text boxes describe various software features and their applications.

X-Ray and neutron diffraction

- Experimental pole figures from 0D, 1D and 2D detector

Diffraction profiles

- Strain - Stress analysis
- Profiles fitting by model functions

Electron diffraction patterns analysis

- Cross-correlation
- Virtual contrast imaging
- Indexation

Strain and dislocation density

- High Resolution - EBSD
- Geometrically Necessary Dislocations

Orientation based mapping

- Intra-granular quantities (disorientations...)
- Grains and Twins detection
- IPF maps, partitioning, CSL detection...

Texture analysis

- Pole figures, IPF, Euler sections
- Physical properties
- Volume fractions

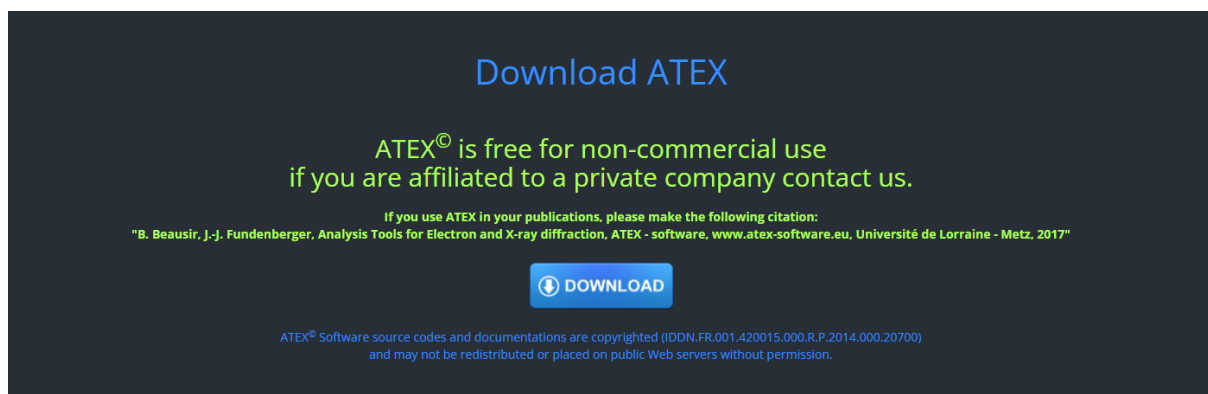
Freely available on
www.atex-software.eu

ATEX-software

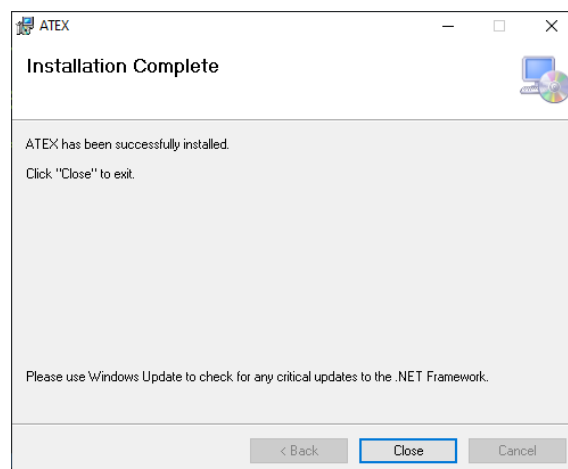
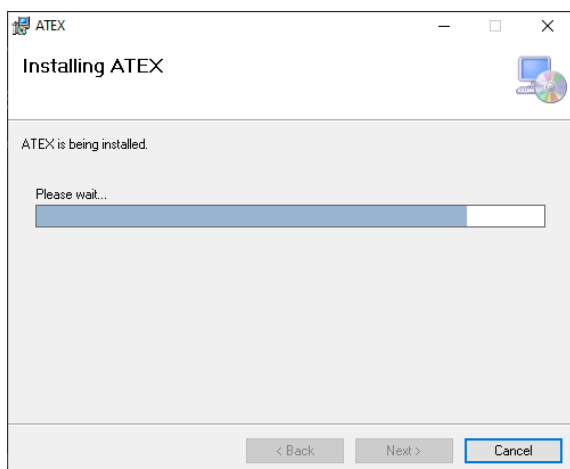
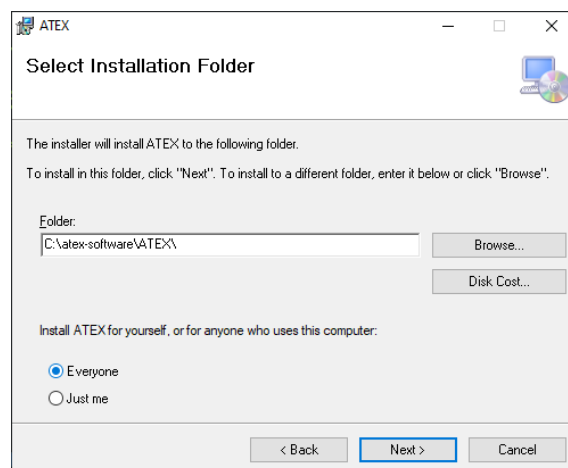
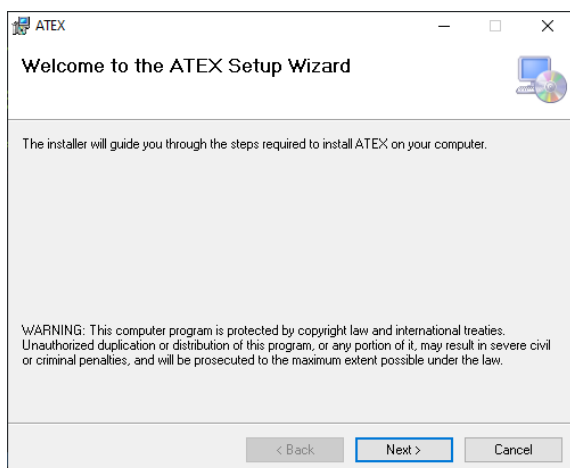
Permanent link
User and developer support

www.atex-software.eu
<http://www.atex-software.eu/help.html>

Download the software at www.atex-software.eu (file ATEX_Setup.msi)



Install it on your computer (execute ATEX_Setup.msi)



Installation Complete, click on close button

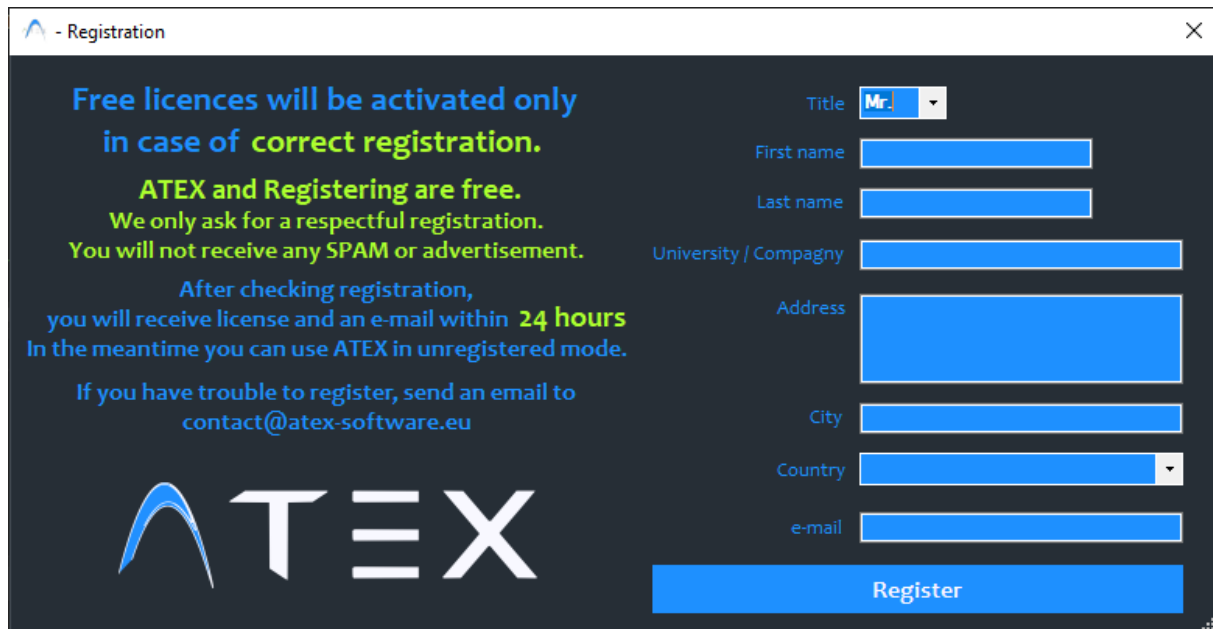
ATEX-software

Permanent link
User and developer support

www.atex-software.eu
<http://www.atex-software.eu/help.html>

Registering

When you open ATEX for the first time, the following form appears.



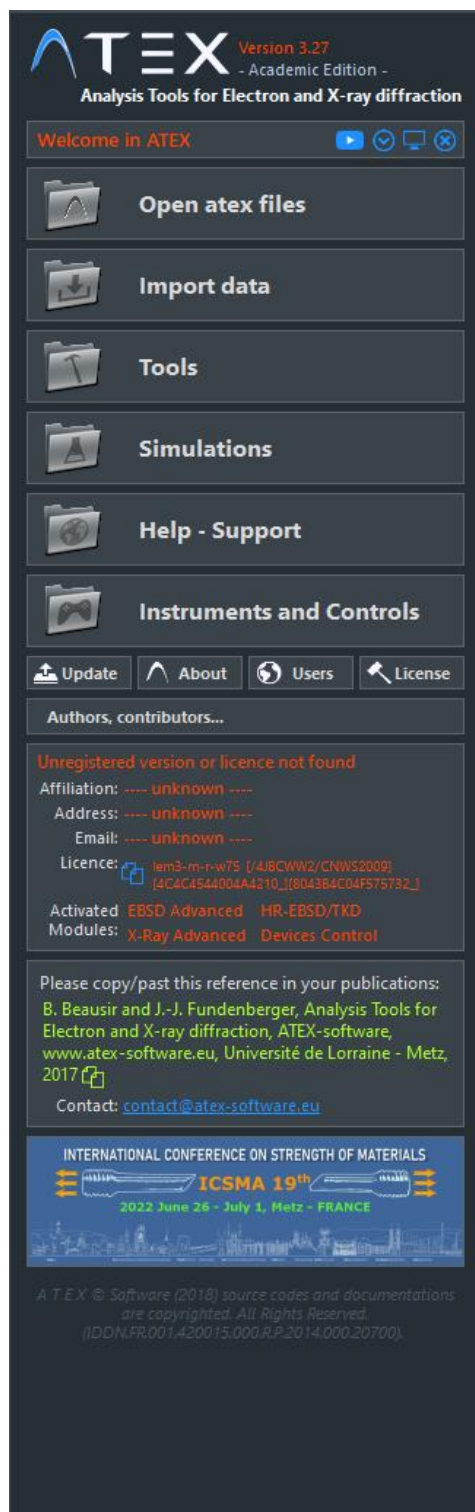
Fill the form correctly and click on the register button, an internet page will open in your web browser saying "Thank you for registering", you can now close it and wait for the licence activation (max 24h)

ATEX-software

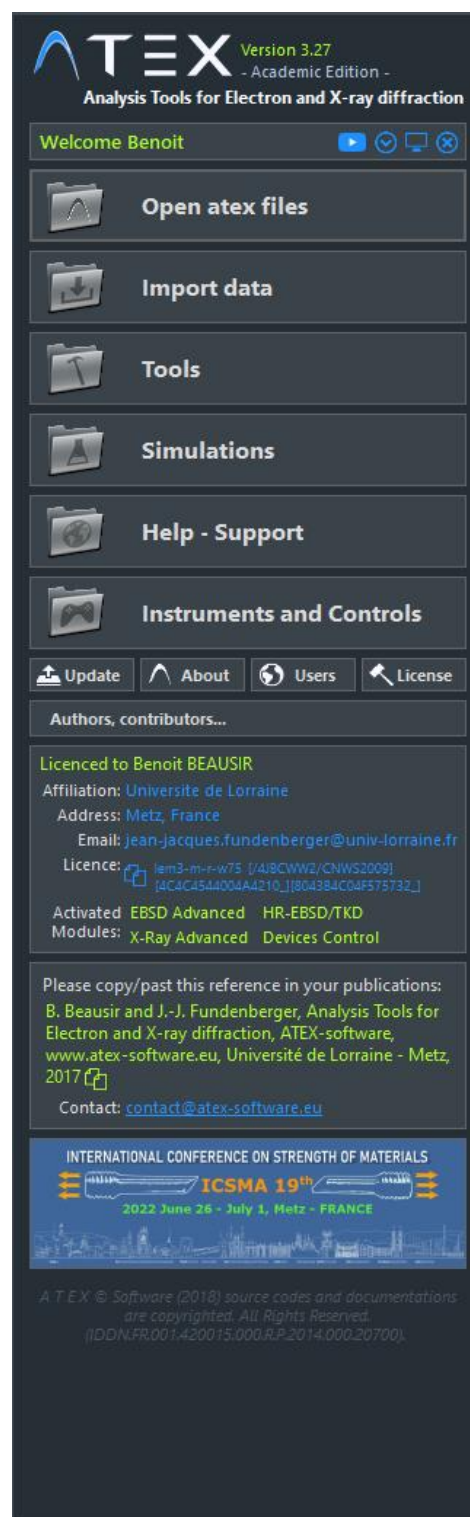
Permanent link
User and developer support

www.atex-software.eu
<http://www.atex-software.eu/help.html>

Before the licence be activated the main window of the software will look like this. You can already use the software with some limitations



Once the licence is activated your name should appears at the top of the main window



ATEX-software

Permanent link
User and developer support

www.atex-software.eu
<http://www.atex-software.eu/help.html>

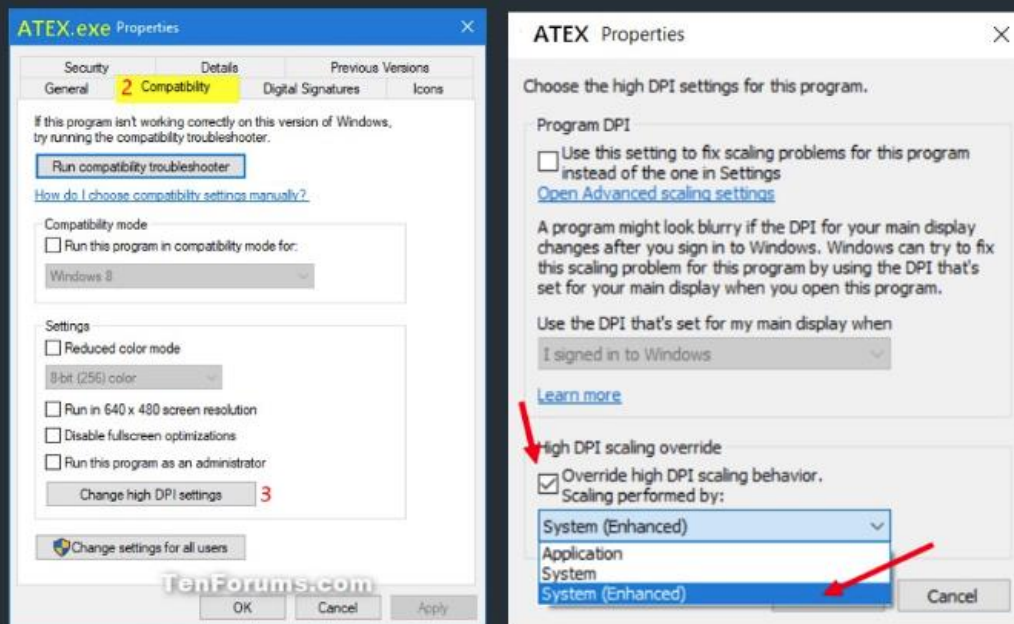
Good to know

Environment requirements:

- Works on windows 7, 8 and 10 operating systems (64 bits).
- The computer need an internet connection.
- Prefer an install on a computer equipped with a large screen (Minimum 1360x800).
- Avoid c:/program files if you are not administrator of your computer.
- If you are not administrator, run the programm as administrator can help for some functions

- On LAPTOP, (especially with high DPI screen, 4K for instance).

- 1 - Right click on ATEX.exe file located in the install directory, and choose "Properties"
- 2 - Go to "Compatibility" Tab
- 3 - Click on "Change high DPI settings" button
- 4 - Check the box "Override high DPI scaling behaviour" and select "System (Enhanced)" -> OK -> OK
- 5 - Open ATEX



Registration Problem Solutions:

- The computer need an internet connection.
- Add ATEX.exe AND the website <http://www.atex-software.eu/> to your windows firewall exceptions.
- Add ATEX.exe AND the website <http://www.atex-software.eu/> to your antivirus exceptions.

ATEX-software

Permanent link
User and developer support

www.atex-software.eu
<http://www.atex-software.eu/help.html>